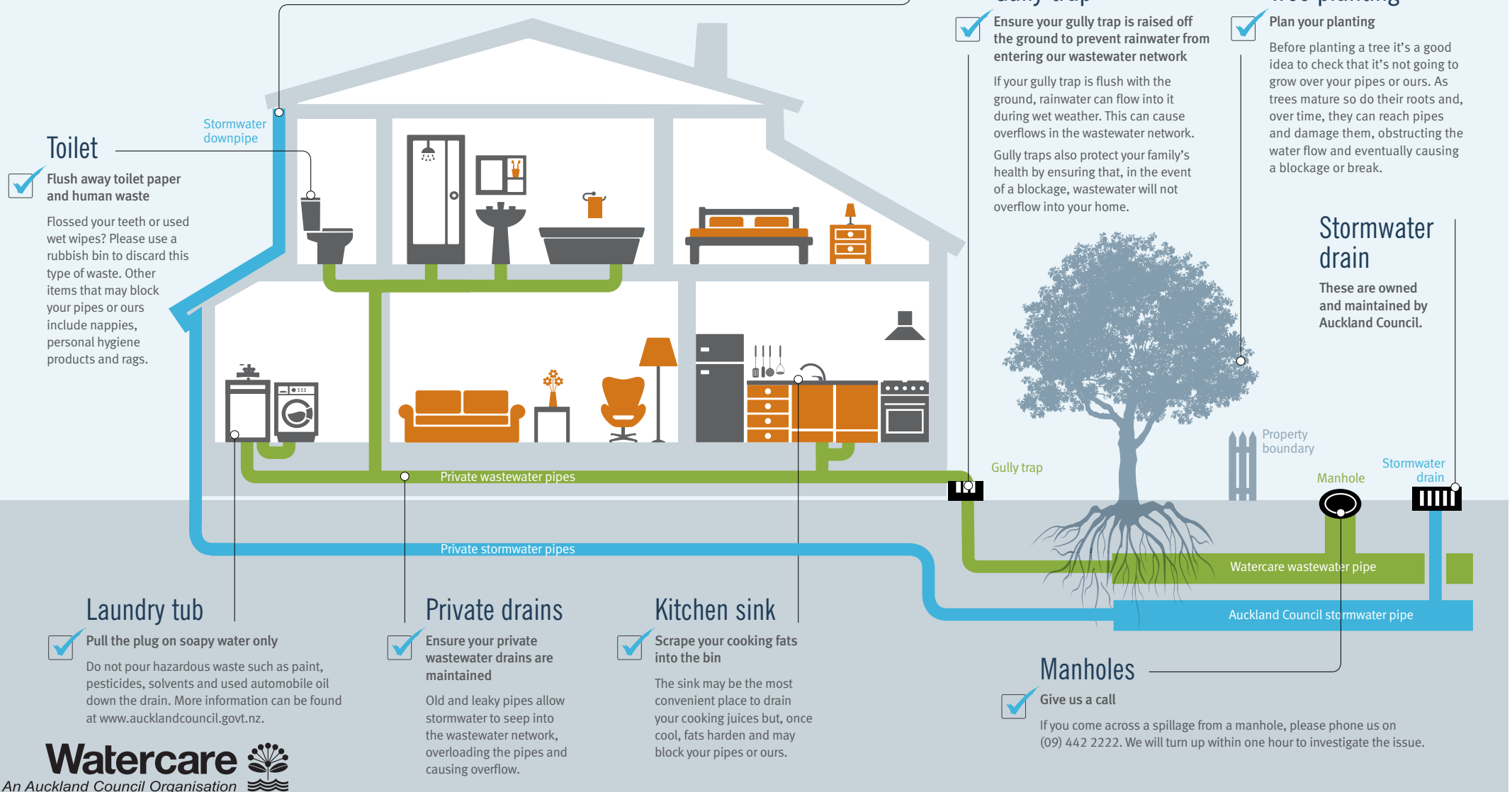


# KEEPING YOUR PIPES FLOWING

Every time you flush the toilet, pull the plug from a sink or have a shower, the wastewater drains into your private plumbing and out to our network.

While the wastewater that enters our network consists predominantly of water, it also contains human waste, food scraps, fats, debris, chemicals and pharmaceuticals. Some of this matter can build up in private and public pipes, causing blockages and overflows which can be harmful to our health, harbours and waterways. This is why it is important for all of us to be conscious of what we pour or flush down our private drains.



## Toilet

- ✓ Flush away toilet paper and human waste

Flossed your teeth or used wet wipes? Please use a rubbish bin to discard this type of waste. Other items that may block your pipes or ours include nappies, personal hygiene products and rags.

Stormwater downpipe

## Stormwater downpipe

- ✓ Check that your stormwater downpipe connects to the stormwater network, not our wastewater network

When stormwater enters the wastewater network, it can cause overflows. You can help us to reduce the frequency and volume of overflows by:

- making sure your stormwater downpipe connects to the stormwater network and not our wastewater network
- making sure your gully trap is raised off the ground to prevent rainwater from entering our wastewater network.

## Gully trap

- ✓ Ensure your gully trap is raised off the ground to prevent rainwater from entering our wastewater network

If your gully trap is flush with the ground, rainwater can flow into it during wet weather. This can cause overflows in the wastewater network.

Gully traps also protect your family's health by ensuring that, in the event of a blockage, wastewater will not overflow into your home.

## Tree planting

- ✓ Plan your planting

Before planting a tree it's a good idea to check that it's not going to grow over your pipes or ours. As trees mature so do their roots and, over time, they can reach pipes and damage them, obstructing the water flow and eventually causing a blockage or break.

## Stormwater drain

These are owned and maintained by Auckland Council.

## Laundry tub

- ✓ Pull the plug on soapy water only

Do not pour hazardous waste such as paint, pesticides, solvents and used automobile oil down the drain. More information can be found at [www.aucklandcouncil.govt.nz](http://www.aucklandcouncil.govt.nz).

## Private drains

- ✓ Ensure your private wastewater drains are maintained

Old and leaky pipes allow stormwater to seep into the wastewater network, overloading the pipes and causing overflow.

## Kitchen sink

- ✓ Scrape your cooking fats into the bin

The sink may be the most convenient place to drain your cooking juices but, once cool, fats harden and may block your pipes or ours.

Gully trap

Property boundary

Manhole

Stormwater drain

Watercare wastewater pipe

Auckland Council stormwater pipe

## Manholes

- ✓ Give us a call

If you come across a spillage from a manhole, please phone us on (09) 442 2222. We will turn up within one hour to investigate the issue.